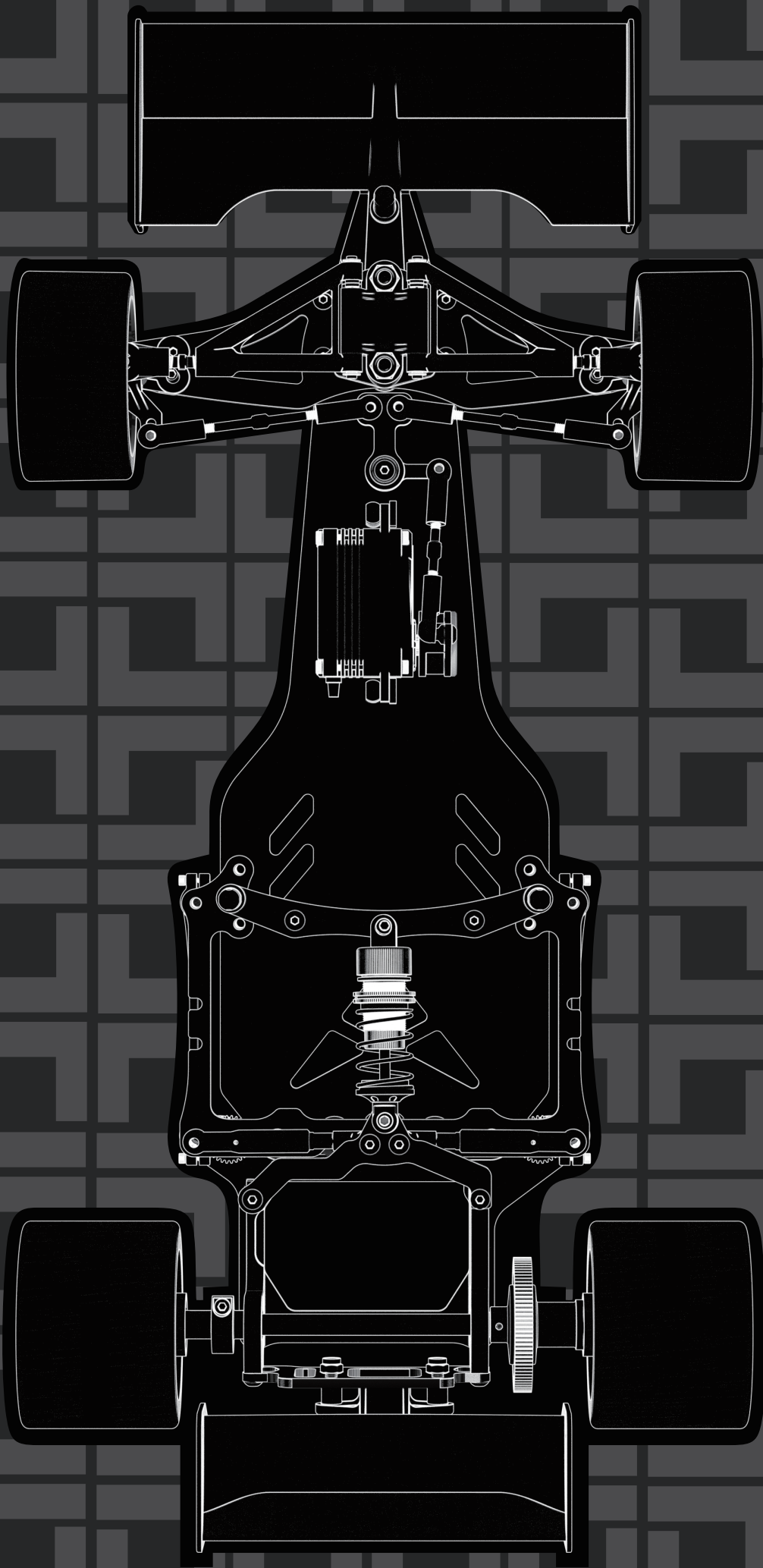


RS

F1-200-V2



Thank you for purchasing this TEAMSAXO product. This high performance competition kit has been proudly manufactured by TEAMSAXO World Champion R/C car manufacturer.
Proper assembly of this product will provide fun,safe enjoyment.

PRECAUTIONS FOR SAFE ENJOYMENT OF YOUR R/C CAR

For children under the age of 13, parental guidance is recommended when running.

ASSEMBLY PRECAUTIONS

Do not assemble around small children. The parts can be dangerous if accidentally swallowed.

Check the contents carefully before assembly. Please contact Customer Support if you happen to notice any defective or missing items.

You will find the assembly process much easier by carefully reading through the manual,and familiarizing yourself with the instructions.

Many different tools are required during assembly. For safety purposes,please use suitable tools. Exercise extra caution when using a sharp tool such as a hobby knife.

Many different materials are used for the parts. Use extra care when handling parts with sharp edges, such as machined metal parts.

When cutting plastic parts,watch for any flying parts.

Try to assemble any rotating parts of drivetrain parts as smooth as possible.

Bundle wires neatly away from the ground or any moving drivetrain components.Make sure that all wires are properly connected to prevent shorting.

Unnecessary modifications may be unsafe and hinder performance.

Always paint in a well ventilated area away from flames.

PRECAUTIONS BEFORE RUNNING

Teamsaxo R/C cars are built for competition use,and some models may exceed speeds of 40km per hour. Practice common sense and run the car in open safe places,or R/C car tracks.

Do not run the car on public roads with high amounts of traffic,or in areas that may cause an inconvenience to people in that area.

R/C cars are controlled using radio frequency.In a worst-case scenario.radio interferences may cause loss of control.

If others near you are running R/C cars,confirm that they are not running on the same frequency.

R/C cars do not like water.Avoid running on rainy days,or areas with water puddles.Exposure of the electronics to water may cause loss of control or damage to the electronics

The drivetrain of an R/C car consists of many moving parts like gears,belts,shafts,and tires.Avoid touching these areas when the battery is connected.

Many parts of an R/C car will become hot after running. Allow the parts to sufficiently cool before conducting any maintenance

BEGINNING A RUN

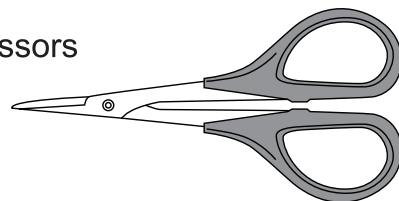
- 1.Place the R/C car on a stand so the wheels are off the ground.
- 2.Confirm that the speed controller switch is OFF,and connect the motor and battery
- 3.Extend the transmitter antenna and turn the switch ON. (It is unsafe to use a transmitter with low voltage.Make sure that the transmitter batteries are good before running)
- 4.Turn the speed controller switch ON.

FINISHING A RUN

- 1.Turn the speed controller switch OFF.
- 2.Disconnect the battery.
- 3.Turn the transmitter switch OFF,and retract the antenna.

ASSEMBLING TOOLS REQUIRED (NOT INCLUDED IN KIT)

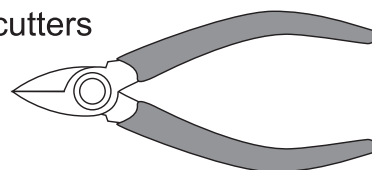
Scissors



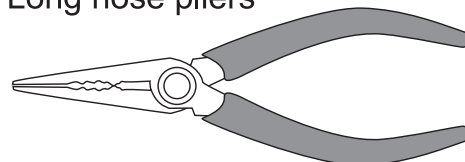
Modeling knife



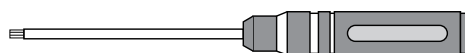
Side cutters



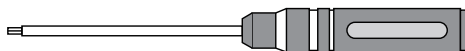
Long nose pliers



Hex wrench (1.5mm)



Hex wrench (2mm)



Tweezers



F1-200-V2 CHASSIS SPECIFICATION

Overall Length	: 413mm	Overall Width	Front width :200mm
Wheelbase length	: 260mm		Rear width :200mm
Weigh Chassis only	: 500g		

Cap

	M2x6	SJG206
	M3x4	SJG304
	M3x6	SJG306
	M3x8	SJG308
	M4x12	SJG412

Cap screw

	M2.5x8	SG2.508
	M2x6	SG206

E-Ring

	E-ring2.0	OE-E2.0
--	-----------	---------

Screw

	M2.5x4	SIG254
	M3x6	SIG306
	M3x10	SIG310
	M3x14	SIG314
	M3x16	SIG316

Grub screw

	M3x3	SK303
	M3x10	SK310

Lock nut







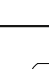
	M3	SN-M3
	M4	SN-M4
	M4	SN-M4-F

Ball bearing

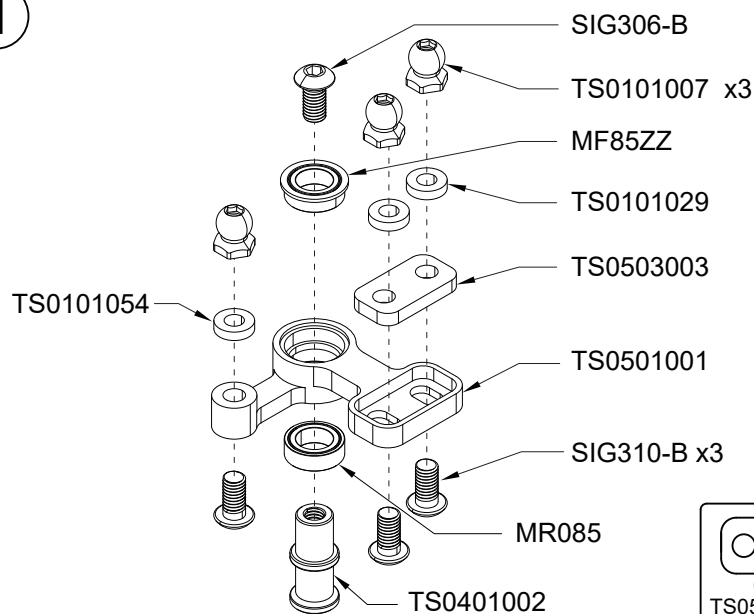
	5x8x2.5	MR085
	5x8x2.5	MF85ZZ
	6.35x9.525x3.175	FR168ZZ
	6.35x9.525x3.175	R168-2RS
	5x10x4	MR105


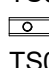


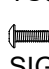


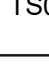


①~④ Kit Bag A

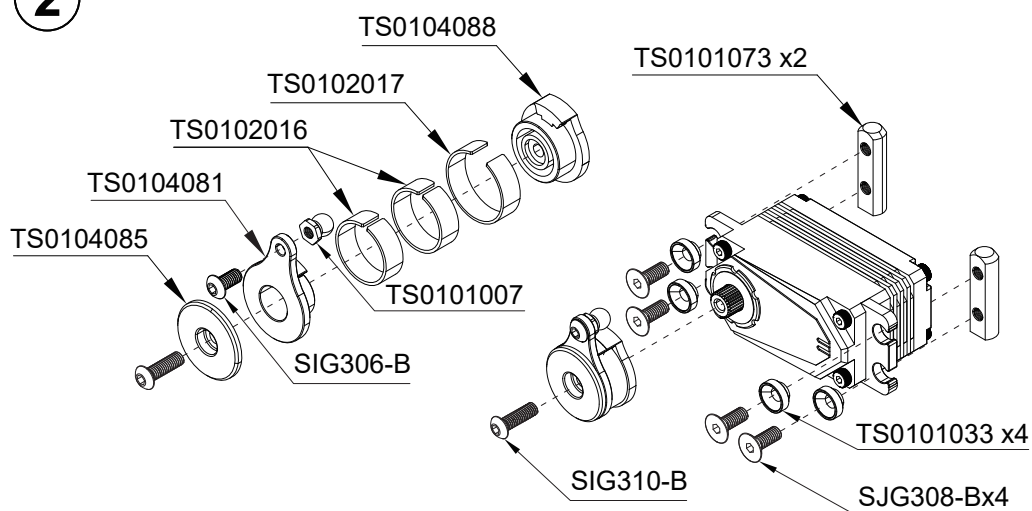
-  TS0101007.....3
-  TS0101029.....2
-  TS0101054.....1
-  SIG306-B.....1
-  SIG310-B.....3
-  MR0851
-  MF85ZZ1

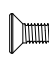
①



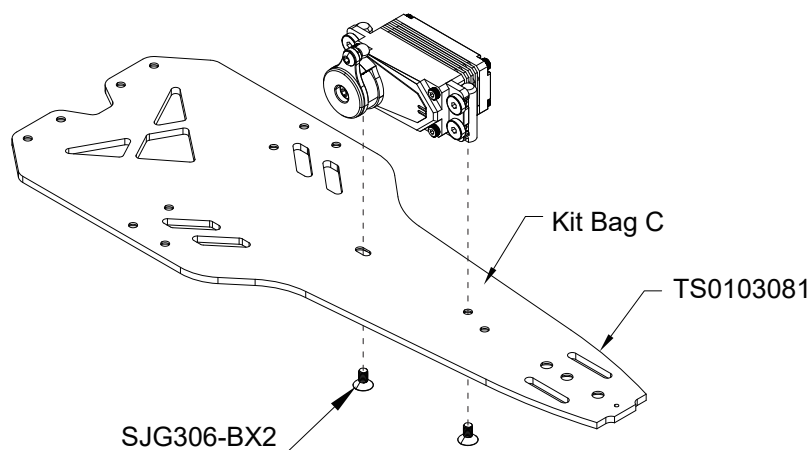
-  TS01010071
-  TS01010732
-  TS01020171
-  TS01020162
-  SIG310-B1
-  SJG308-B4
-  SIG306-B1
-  TS0101033.....4

②



-  SJG306-B.....2

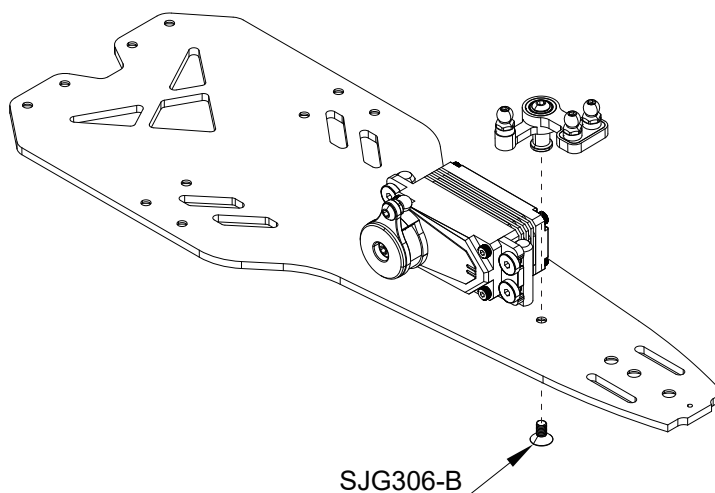
③





SJG306-B.....1

4



⑤ ~ ⑪
Kit Bag B



TS0102015.....2



TS0101007.....2



SIG2.54.....2



SIG310.....2

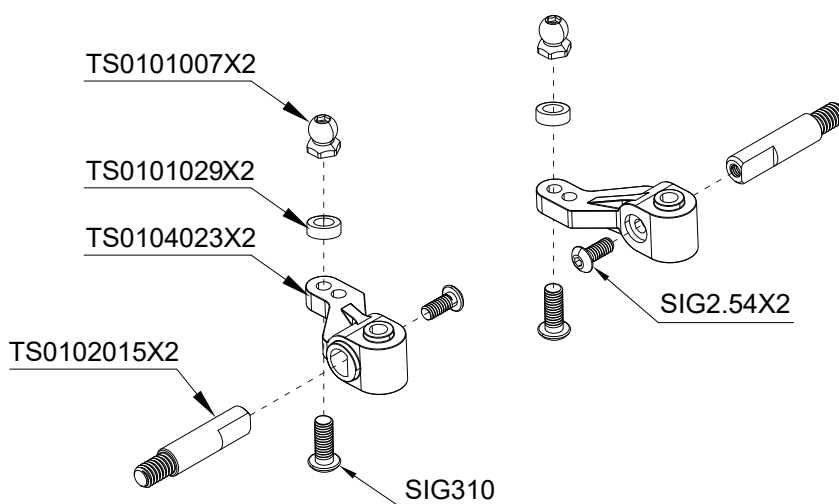


TS0101029(2.5mm)2



TS0104023.....2

5

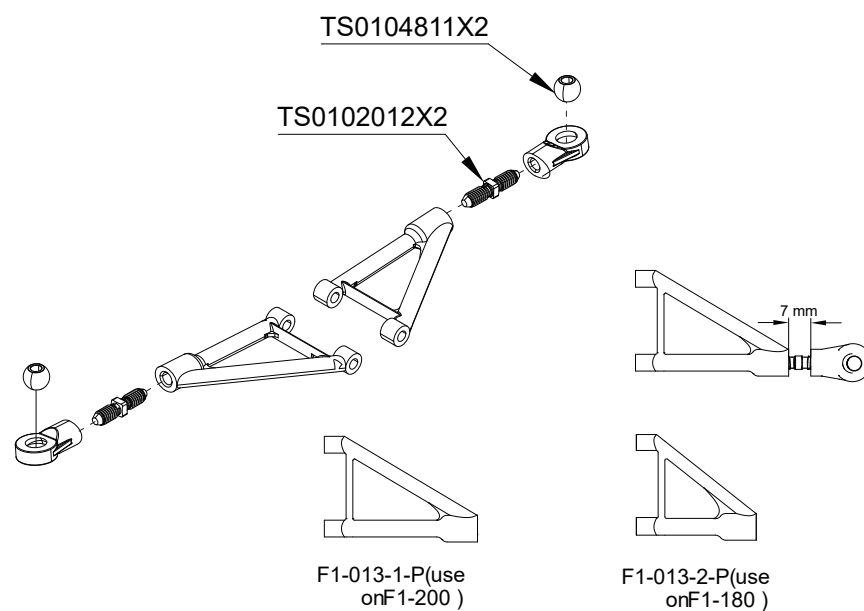





TS0102012.....2



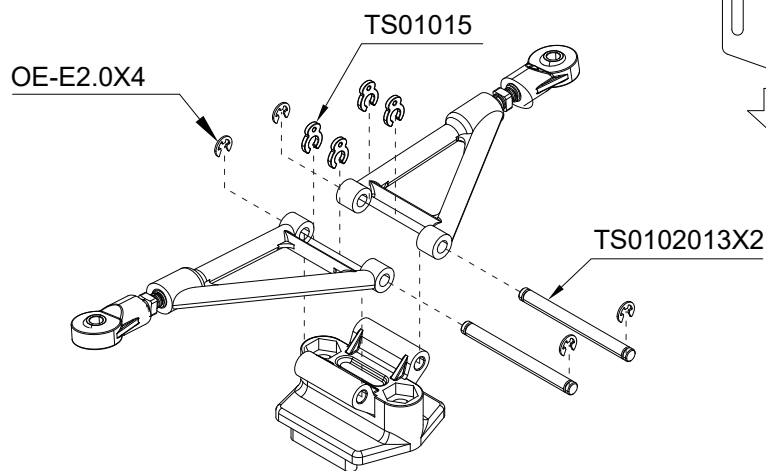
TS0104811.....2


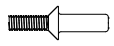
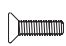


6



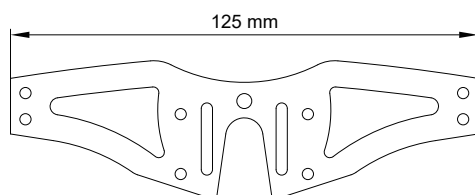
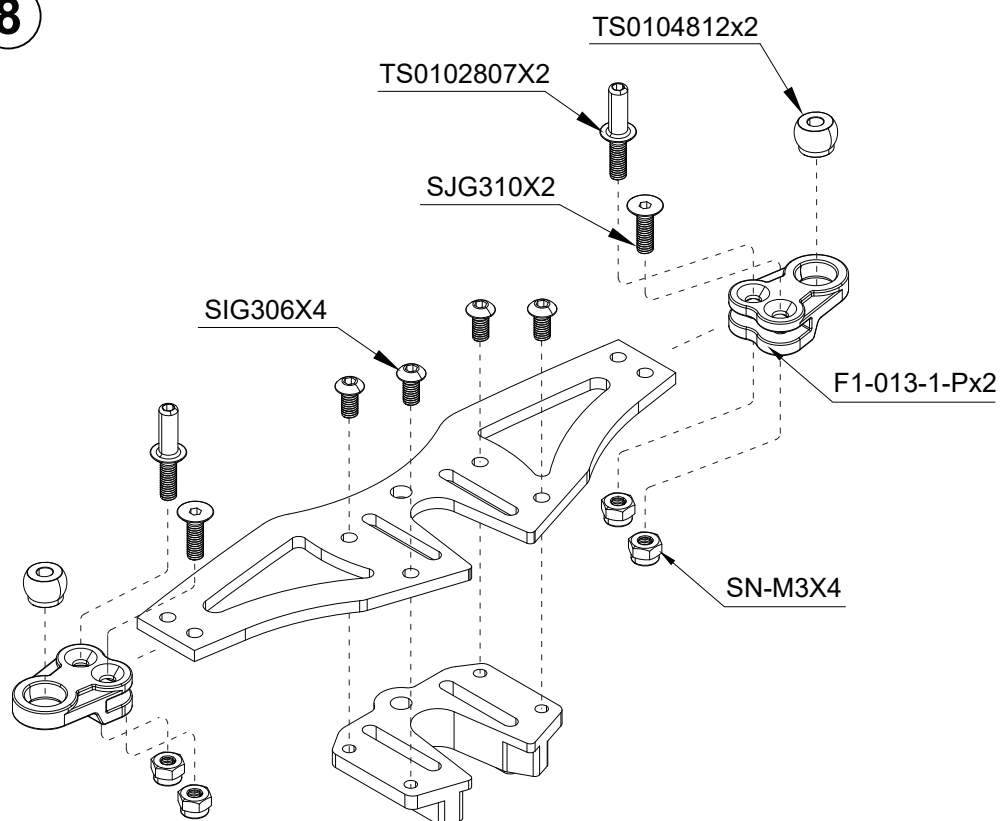
-  (33.6mm)
 TS01020132

 OE-E2.04

 TS01015.....4

7

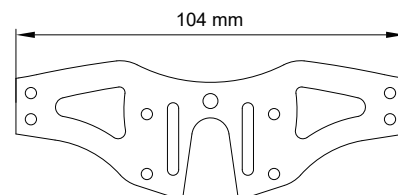


- 
 TS01048122

 TS01028072

 SJG3102

 SN-M3.....4

 SIG3064

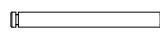
8



F1-10-C (use on F1-200)



F1-09-C (use on F1-180)

 (31mm)

TS01020072




TS01010302




OE-E2.04



TS01020032

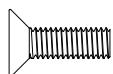
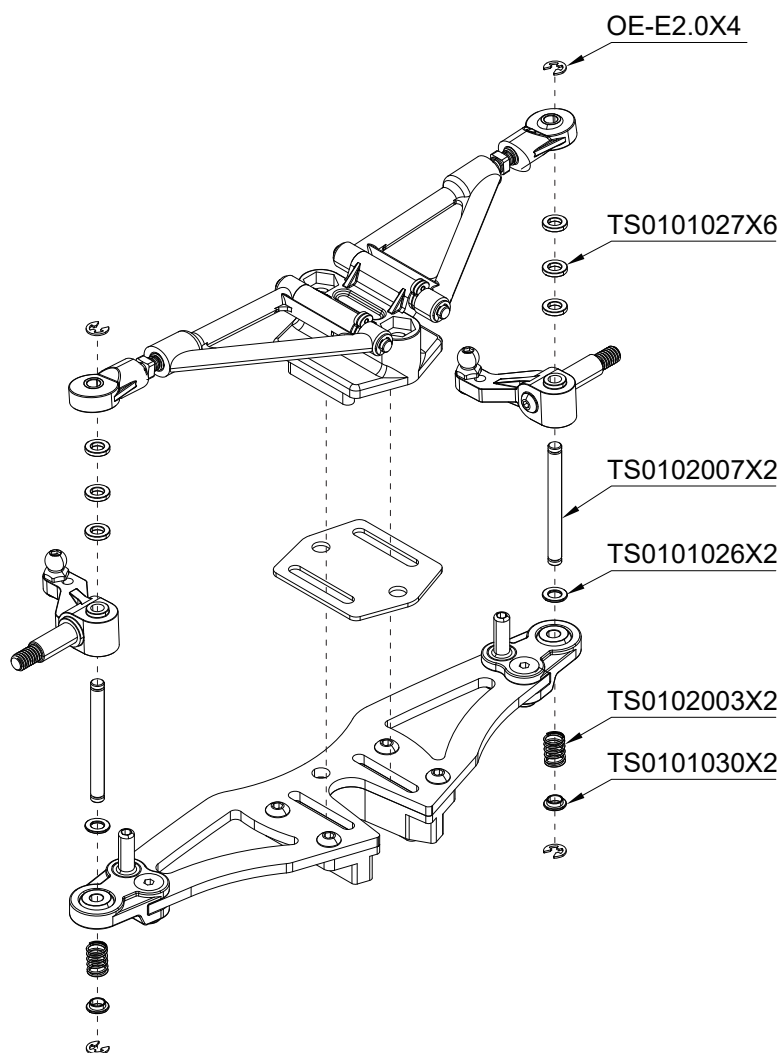
 | (0.5mm)

TS01010262

 | (1.0mm)

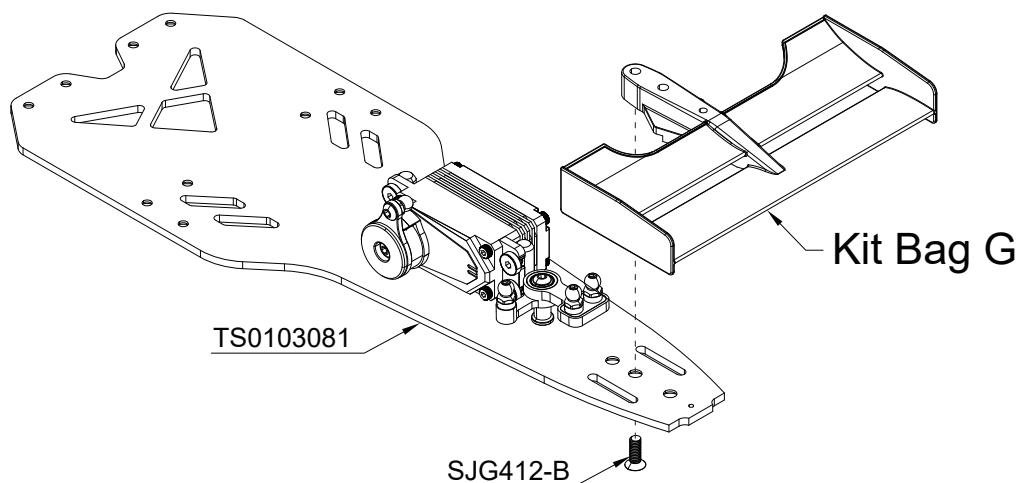
TS01010276

9



SJG412-B1

10



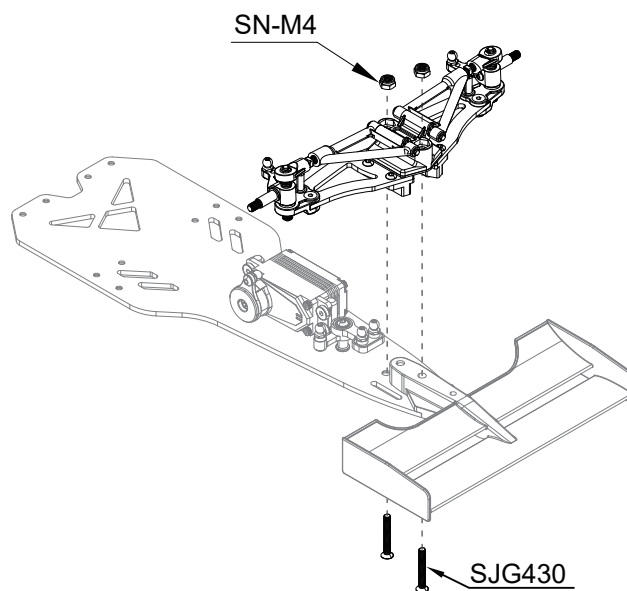


SJG4302



SN-M4.....2

11



12 ~ 15
Kit Bag C

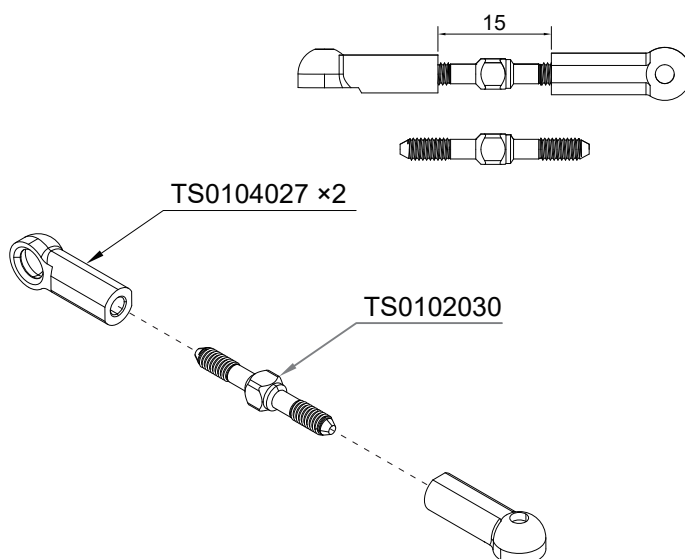


TS01020301



TS01040272

12

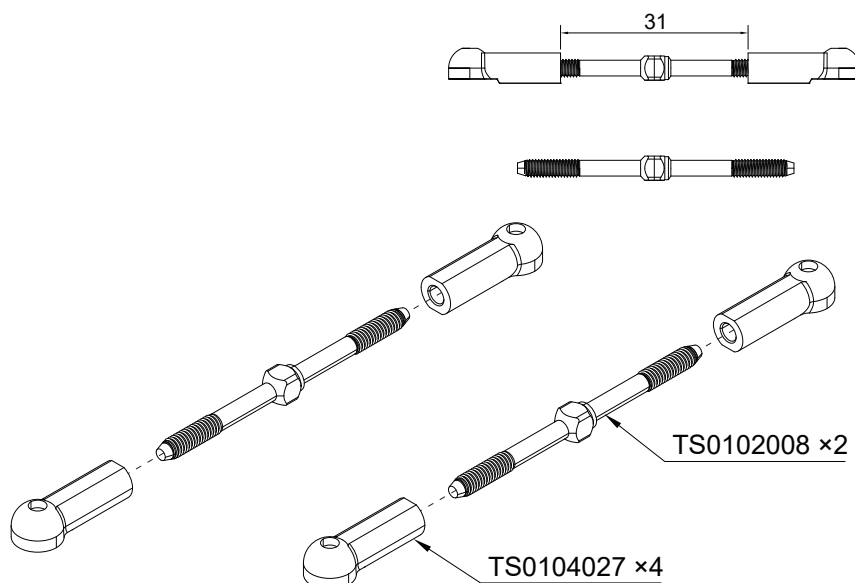


TS01020082

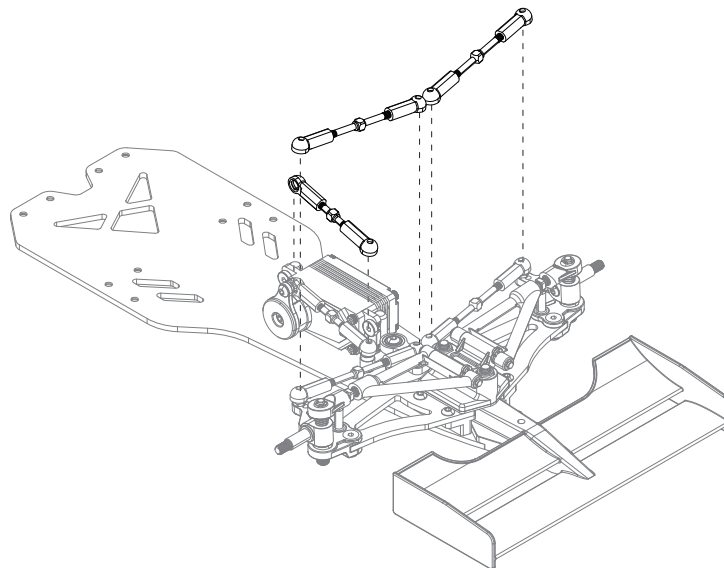


TS01040274

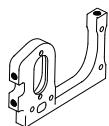
13



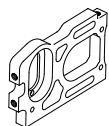
14



15



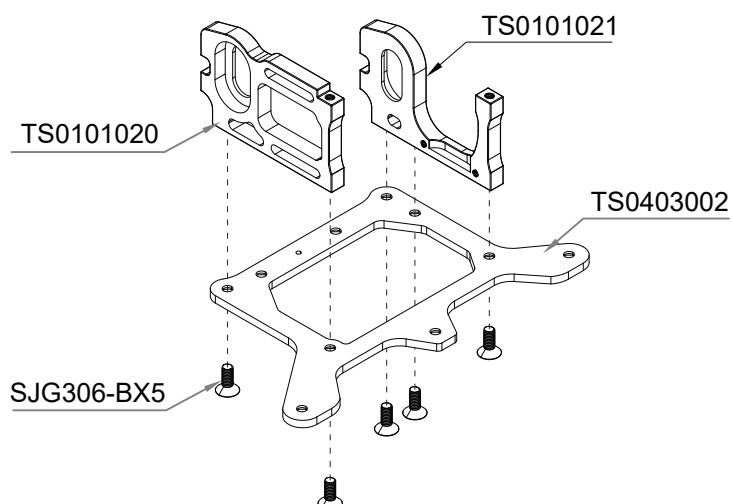
TS01010214



TS01010204



SJG306-B4



16 ~ 24
Kit Bag D

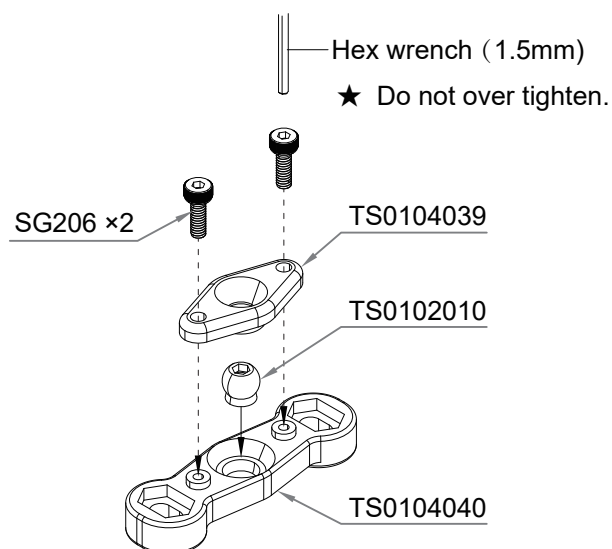


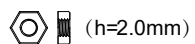
TS01020104



SG2064

16





TS02010312

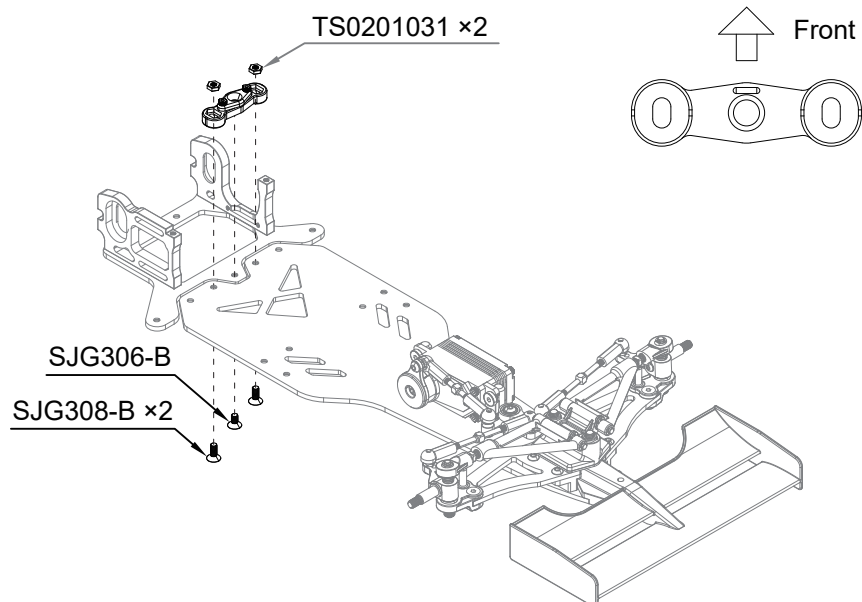


SJG306-B1



SJG308-B2

17

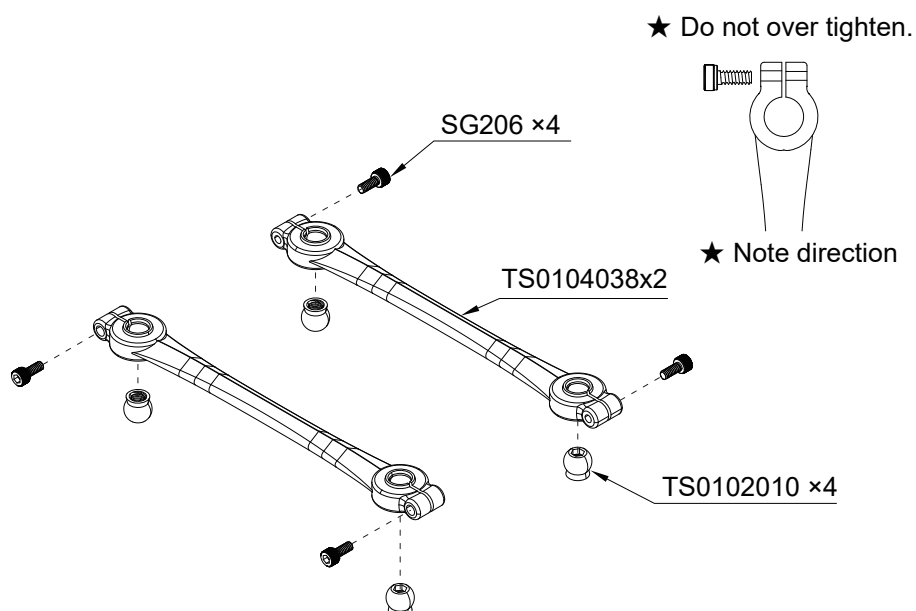


TS01020104



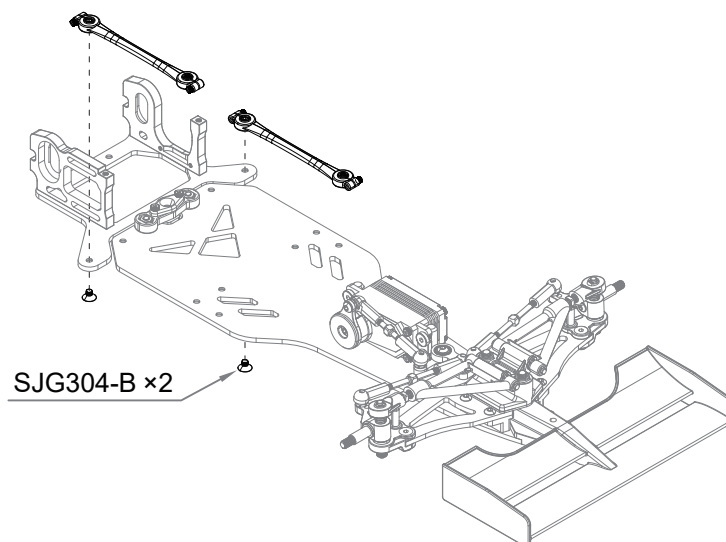
SG2064

18



SJG304-B2

19





TS01010072



TS01020012



TS01040422



SIG306-B8



L=15mm

TS02010264



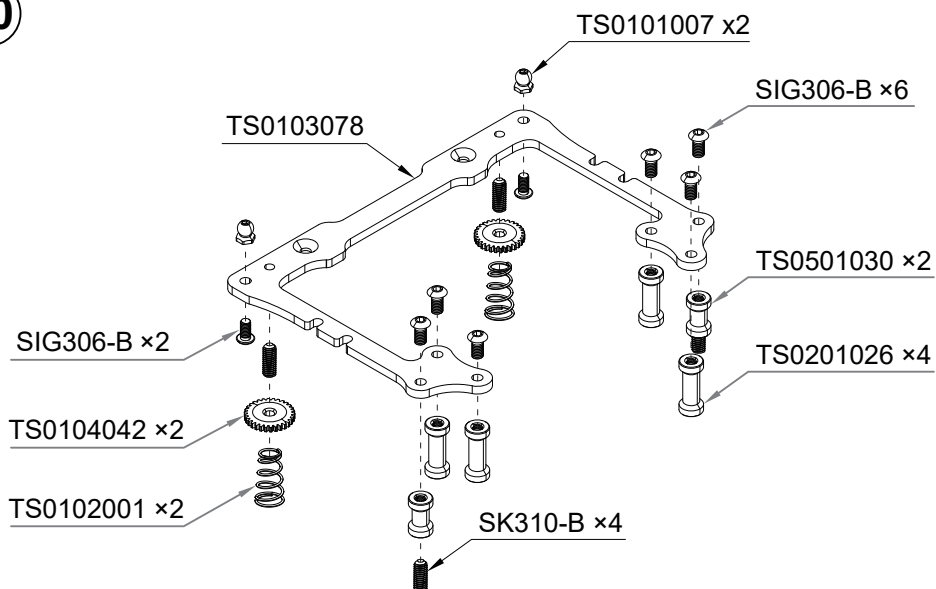
L=9.6mm

TS05010302



SK_M3X104

20

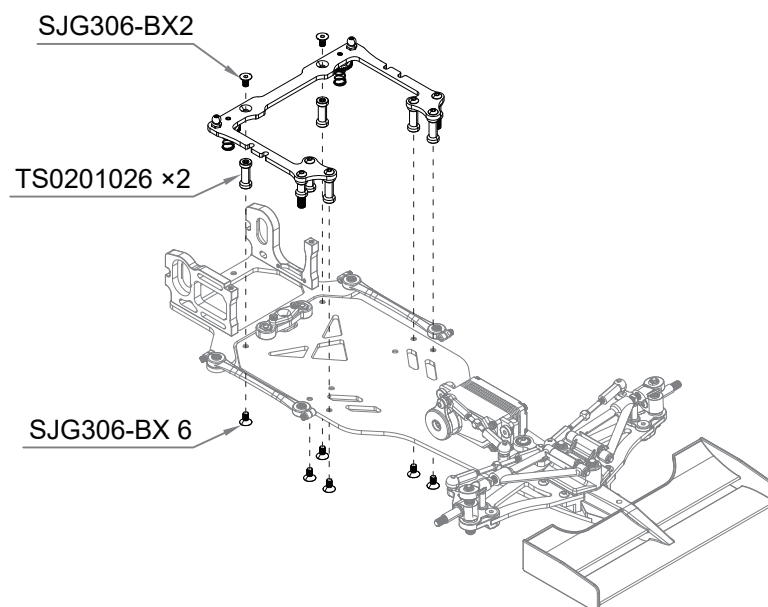


TS0201026.....2



SJG306-B8

21



SIG306-B2



SJG308-B1



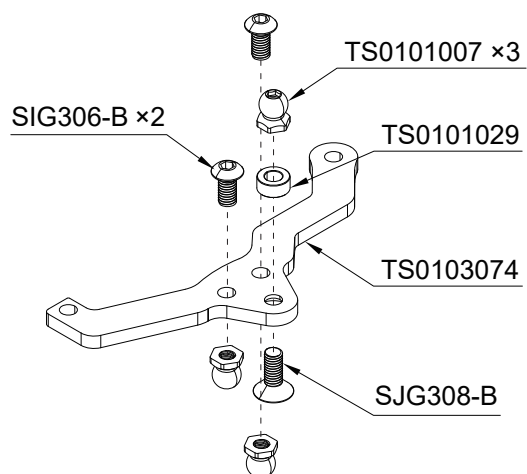
TS01010073



(5.5*3*2.5mm)

TS01010291

22





TS0104026.....4



SK_M3X10.....2

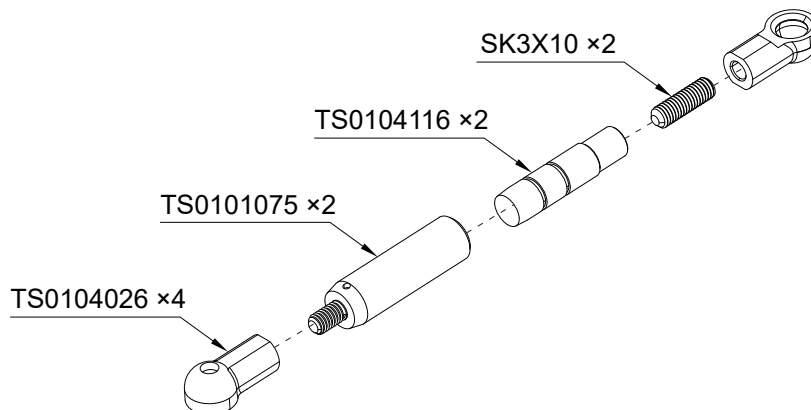


TS01041162



TS01010752

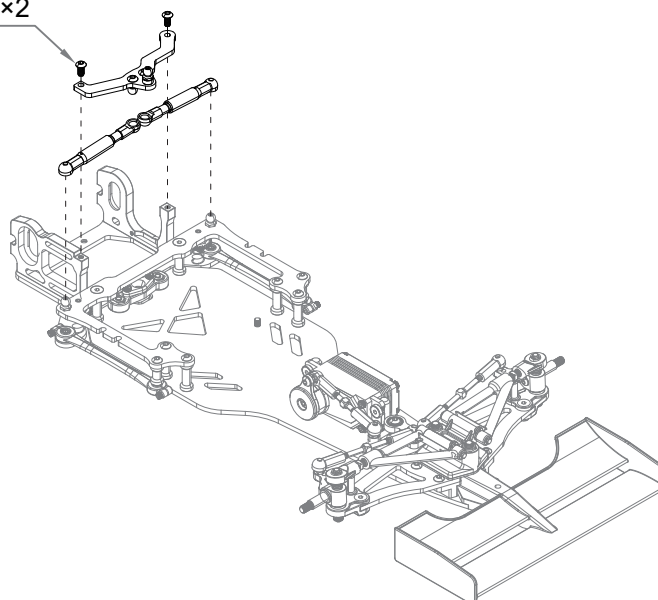
23



SIG306-B.....2

24

SIG306-B ×2

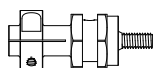


25 ~ 27

Kit Bag E

TS01023 (6×129mm)

TS01023.....2



TS01010022

FR168ZZ (6.35×9.525×3.175)

FR168ZZ2



SG_M2.5X82

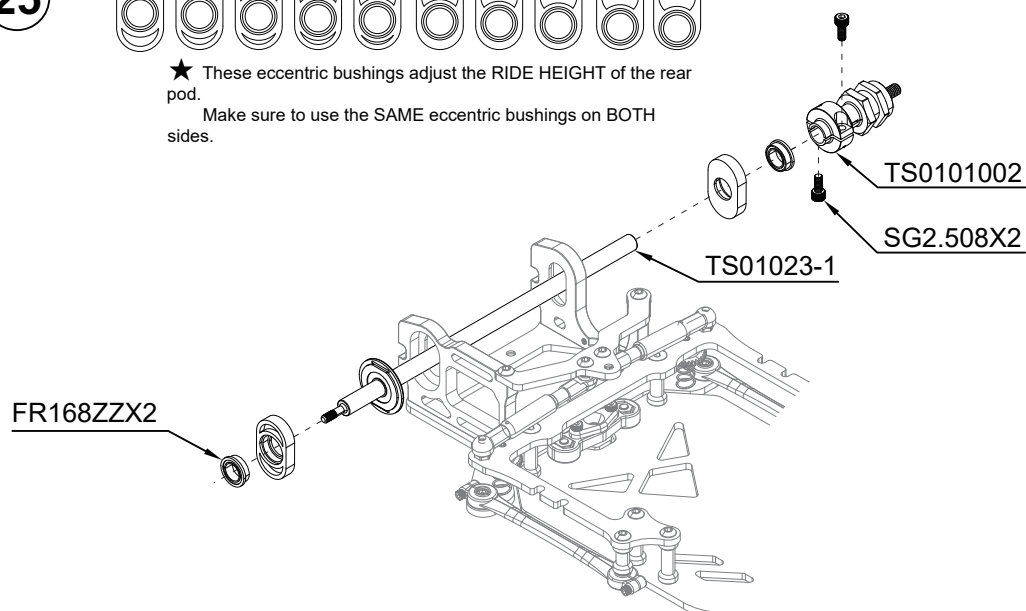
25



★ These eccentric bushings adjust the RIDE HEIGHT of the rear pod.

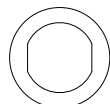
Make sure to use the SAME eccentric bushings on BOTH sides.

FR168ZZX2





TS0501021.....1



TS0102004.....2



($\varnothing 6.35 \times \varnothing 9.525 \times 3.175$)

R168-2RS.....1



($\varnothing 6.35 \times \varnothing 9.525 \times 3.175$)

FR168ZZ.....2



TS0102034.....2



SN_M3.....1



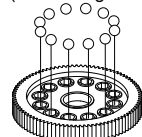
F3-8M.....1



TS0101044.....1

26

White Grease
(for bearing ball 4cc)



92T-64P Spur gear

R168-2RS

TS0508007X12

FR168ZZX2

TS0101044

TS0501021

TS0504011

TS0102004X2

F3-8M

TS0102034X2

SN_M3

★ Fully tighten the lock nut ,then
loosen by a quarter turn (standard
position)

NOTE
ORIENTATION



TS0101005.....1

(2×14)

TS0102028.....1



SK_M3X3.....1

27

Hex wrench (1.5mm)

SK303

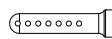
TS0102028

TS0101005



28 ~ 33

Kit Bag F



TS01021.....2



TS0101007.....1



SJG308-B.....3



TS0101029.....1

28

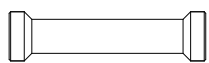
TS0101007

TS01021X2

TS0101029

TS0103075

SJG308 x3



L=26mm

TS01010482

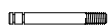
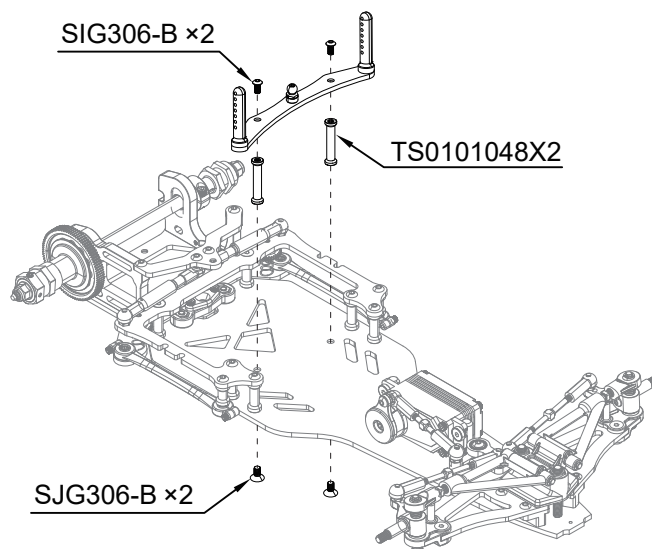


SJG306-B2



SIG306-B2

29



TS01020091



TS01040341



TS01040371



(Ø11.5×Ø14.5×1.5)

TS01050021



(Ø2.8×Ø6.6×Ø1.9)

TS01050041



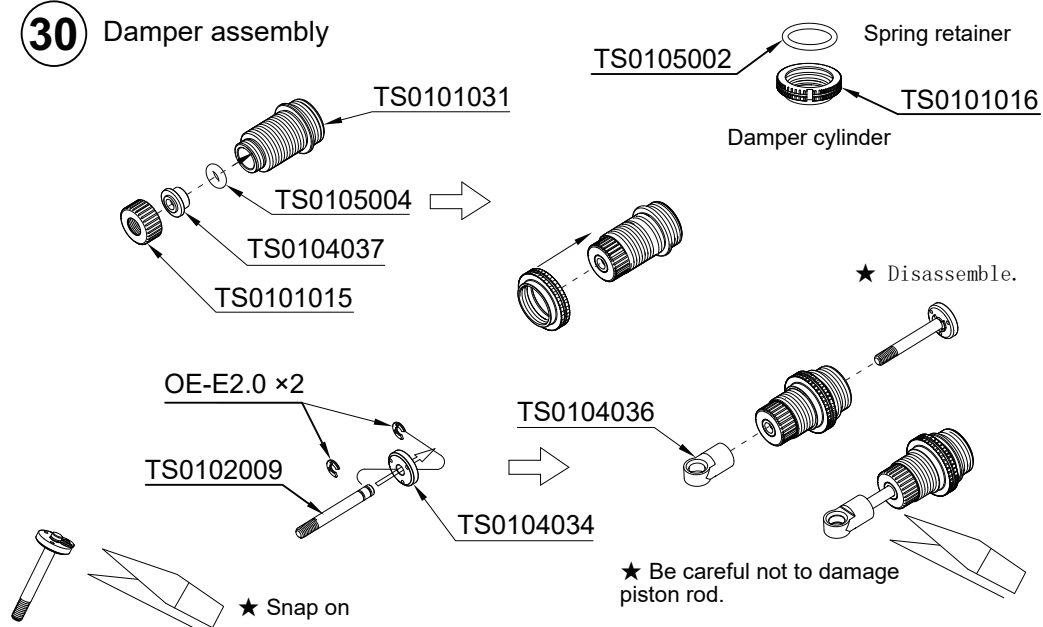
OE_E2.02



TS01010151

30

Damper assembly



TS01050011

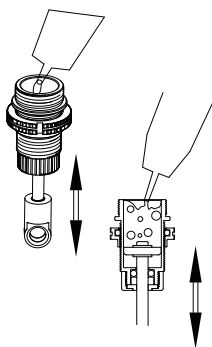


TS01010171

31

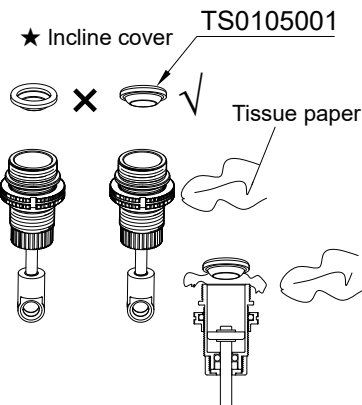
Damper oil

1.Pull down piston and pour oil into cylinder .Remove air bubbles by slowly moving piston up and down.

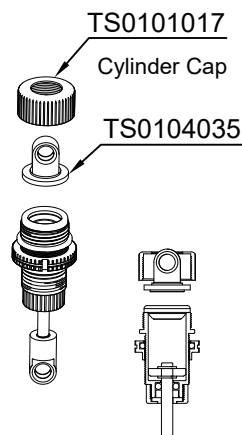


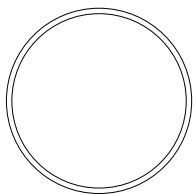
★ Move slowly.

2.Pull down piston, attach oil seal and absorb oil overflow with tissue paper.



3.Tighten cylinder cap.

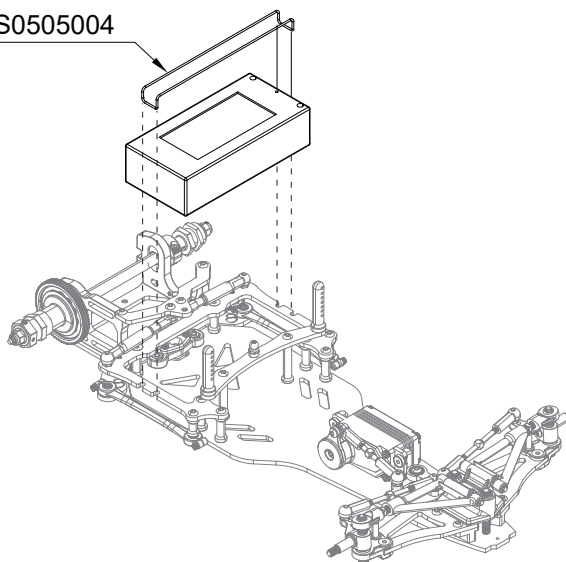




TS05050041

32

TS0505004

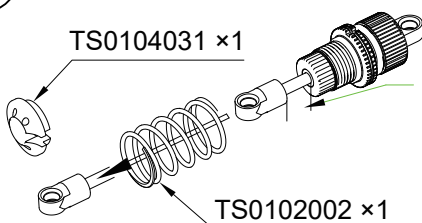


TS0102002.....1

33

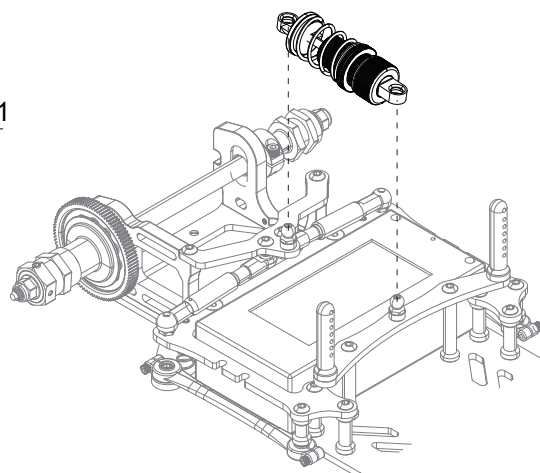
TS0104031 ×1

10mm



TS0102002 ×1

★ Select damper spring according to running surface condition



34 ~ 41
Kit Bag G



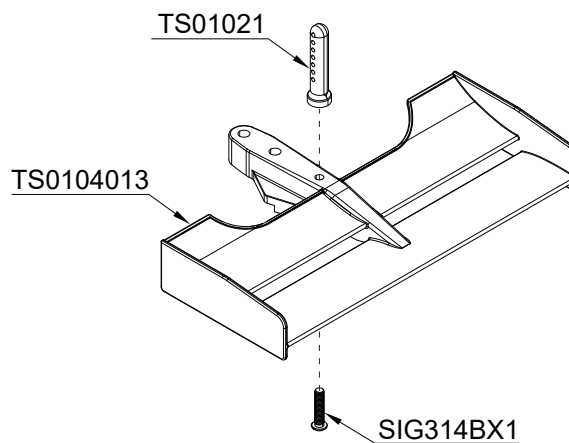
SIG314B.....1


34

TS01021

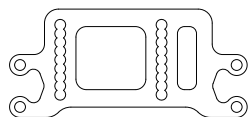
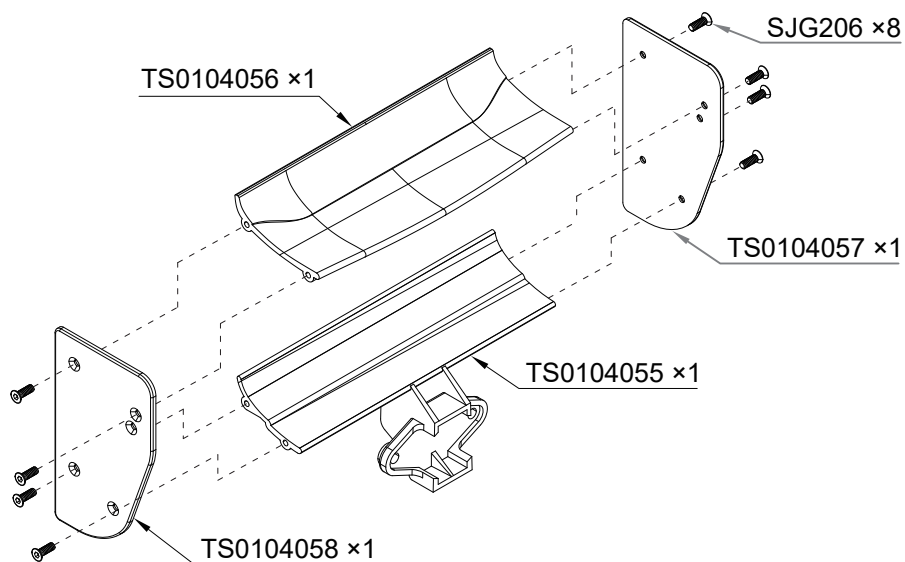
TS0104013

SIG314BX1



 SJG_M2X68

35



TS01030071



TS01040602

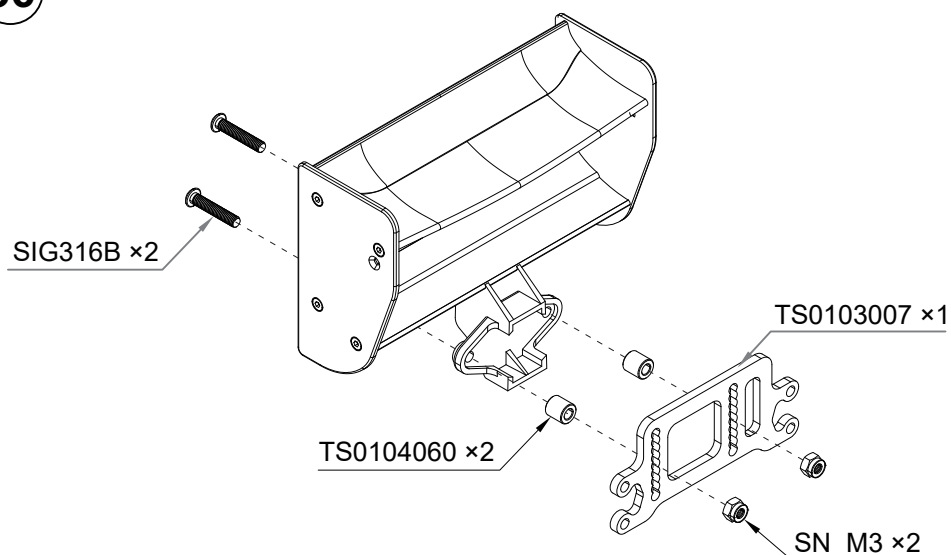



SN_M32



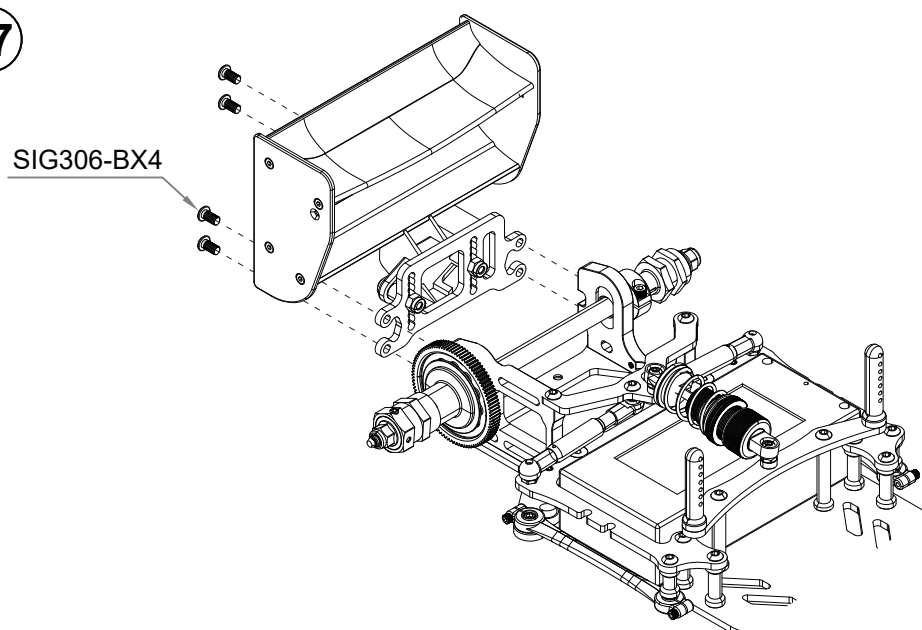
SIG316B2

36



 SIG306-B4

37



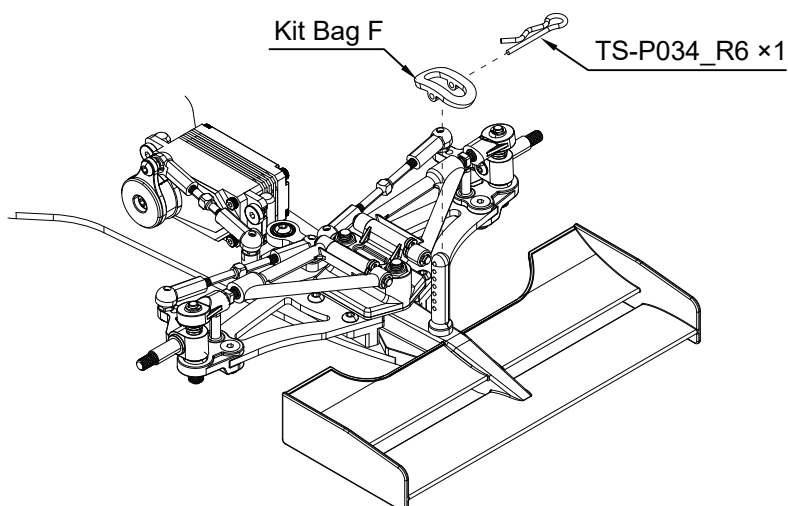


TS01040031



TS-P034 (R6)1

38

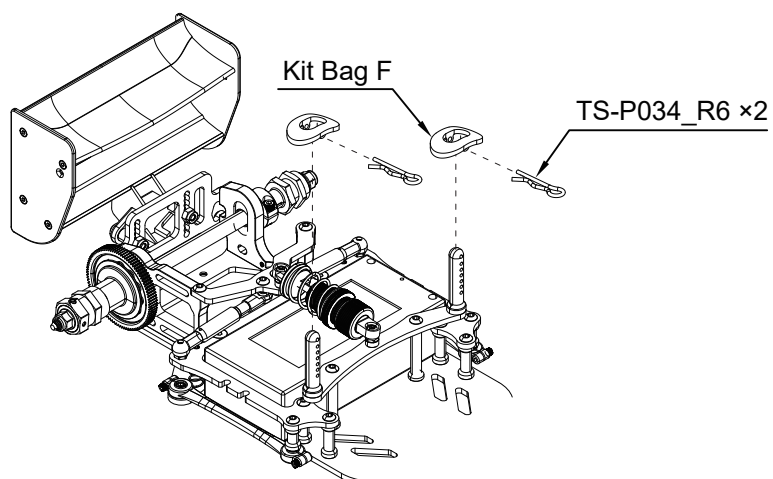


TS0104003.....2



TS-P034 (R6)2

39



SN_M4.....2

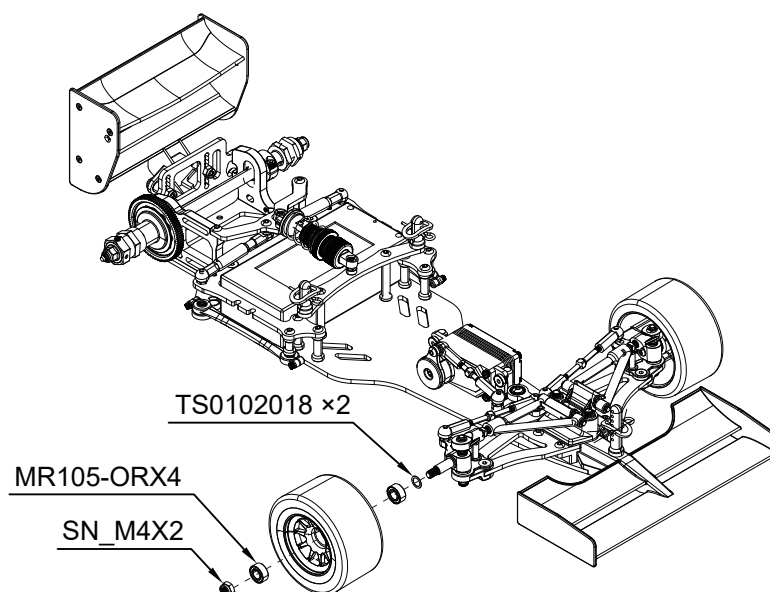
○ | (Ø5×Ø7×0.5)

TS0102018.....2

○ (Ø5×Ø10×4)

MR105-OR.....4

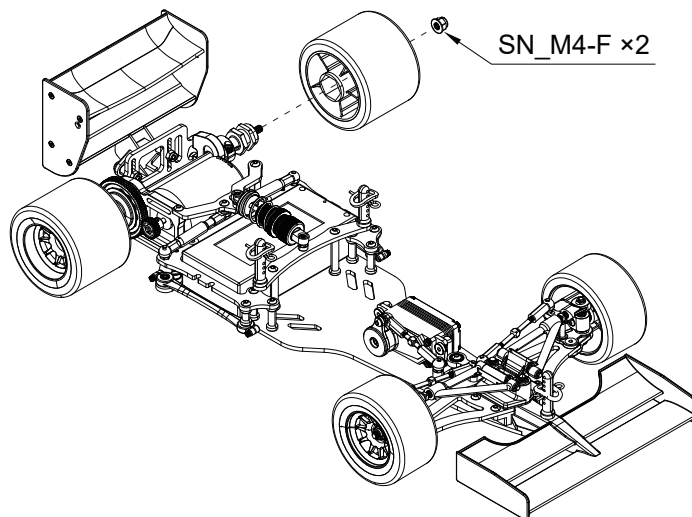
40





SN_M4-F.....2

41



VAPON INDUSTRIAL CO., LTD

HTTP://WWW.SAXORACING.COM

E-MAIL: SAXO@SAXORACING.COM



F1-200-V3



